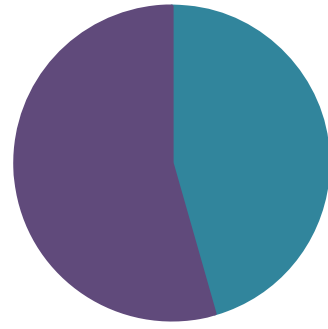


Corporate Parenting

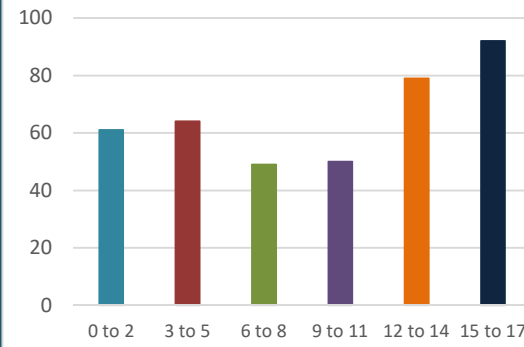
Children in Our Care - 28th September 2020

Gender of Children in Our Care



Female	180	46%
Male	215	54%
Total CIOC	395	

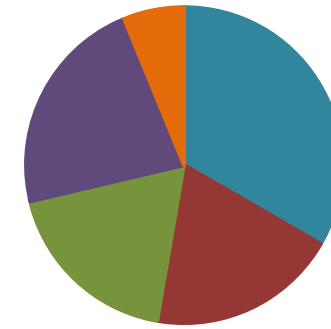
Age Profile of Children in Care



0 to 2	61	9 to 11	50
3 to 5	64	12 to 14	79
6 to 8	49	15 to 17	92

Entering Care Sep 19 to Aug 20

Age of children entering care



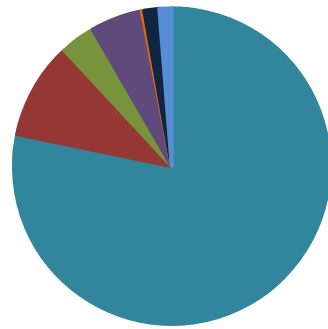
0 to 2	43 (33%)	11 to 15	29 (22%)
3 to 6	25 (19%)	16+	8 (6%)
7 to 10	24 (19%)		

Children in Our Care since 2008

Number of Children in our care since 2008



Ethnicity of Children in Our Care



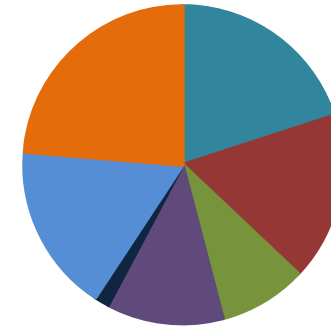
White/UK	309	78%
Asian Pakistani	39	10%
Other	14	4%
Mixed	21	5%
Black	1	0%
White Other	6	2%
Asian Other, incl Indian	5	1%

Where are children in care placed?

Foster Placements (in-house)	130
Placed with Parents	79
Friends & Family	67
Foster Placements (agency)	51
Adoptive Placements	19
Children's Homes (agency)	19
Res Accom Not Subject to CH Regs	11
Other	9
Children's Homes (in-house)	5
Prison/HMYOI	3
NHS	2
Residential School	0
Independent Living	0
Secure	0

# Children in Our Care with a Disability	16
% Children in Our Care with a Disability	4%

Destinations of Care Leavers



Reached 18	27 (20%)
Returned to parents	23 (17%)
Moved in with relatives	12 (9%)
Other reason	16 (12%)
Child Arrangement Order	2 (1%)
Adopted	23 (17%)
Special guardianship	32 (24%)

Entering/Leaving Care since 2001

	Entering	Leaving	Net
Total in 2001	111	95	16
Total in 2002	103	117	-14
Total in 2003	131	134	-3
Total in 2004	102	104	-2
Total in 2005	119	100	19
Total in 2006	94	104	-10
Total in 2007	97	92	5
Total in 2008	114	104	10
Total in 2009	151	94	57
Total in 2010	112	123	-11
Total in 2011	155	128	27
Total in 2012	125	149	-24
Total in 2013	123	120	3
Total in 2014	89	125	-36
Total in 2015	163	139	24
Total in 2016	170	139	31
Total in 2017	161	143	18
Total in 2018	162	153	9
Total in 2019	155	144	11
Total in 2020	76	79	-3

*Please note this table is calculated by calendar years

CLA as at 31st March

	2019/20	2018/19
CLA as at 31st March	411	403
Male	228 (55%)	229 (57%)
Female	183 (45%)	174 (43%)
0 to 2	73 (18%)	88 (22%)
3 to 5	63 (15%)	45 (11%)
6 to 8	52 (13%)	47 (12%)
9 to 11	52 (13%)	58 (14%)
12 to 14	77 (19%)	79 (20%)
15 to 17	94 (23%)	86 (21%)
White/UK	327 (80%)	318 (79%)
Asian Pakistani	42 (10%)	32 (8%)
Other	13 (3%)	16 (4%)
Mixed	18 (4%)	19 (5%)
Black	1 (0%)	3 (1%)
White Other	4 (1%)	7 (2%)
Asian Other, incl Indian	6 (2%)	8 (2%)

Entering Care / Destinations of Care Leavers

	2019/20	2018/19
Age of children entering care		
0 to 2	57 (38%)	80 (47%)
3 to 6	35 (23%)	25 (15%)
7 to 10	20 (13%)	24 (14%)
11 to 15	31 (21%)	26 (15%)
16+	8 (5%)	16 (9%)
Destinations of Care Leavers		
Reached 18	34 (24%)	27 (19%)
Returned to parents	32 (23%)	19 (13%)
Moved in with relatives	10 (7%)	14 (10%)
Other Reason	19 (13%)	19 (13%)
Child Arrangement Order	3 (2%)	5 (4%)
Adopted	21 (15%)	26 (18%)
Special guardianship	23 (16%)	33 (23%)

Performance compared with national, regional and comparator averages

	Current - BwD***	Comparator Average*	Regional Average*	National Average*
Number of children in our care (CIOC) per 10,000 0-18 year old population	102	104	94	65
% in foster care	63%	73%	67%	72%
Of which - in-house provider or family and friends approved care	50%			46%
Of which - Other provider	13%			26%
% in adoption placements	5%	4%	3%	3%
% in residential/resi schools/secure/other residential provision	9%	13%	12%	13%
% placed at home with parents	20%	9%	13%	7%
Placement Stability (% of CIOC with 3 placements or more in a yr)	8%	10%	10%	10%
Placement Stability (% of CIOC in same placement for past 2 yrs & in care for 2.5 yrs+)	65%	69%	69%	69%
% of Care Leavers aged 19-21 in touch with the LA	98%			
% of Care Leavers aged 19-21 years old in Education, Employment or Training	45%	51%	51%	52%
% of Care Leavers aged 19-21 years old in suitable accommodation	98%	88%	88%	85%
Adoption Scorecard (rolling 3 yrs) - entry into care to adoption placement (days)	431			486
Adoption Scorecard (rolling 3 yrs) - Placement Order to matching (days)	162			201
% of children in our care aged 10-17, in care for over 12 months, who have offended	0.6%			
Number of unaccompanied asylum seekers in care	2			

*Comparable information as at March 2019 **CIOC offending data for Q1 2020/21 only ***Current BwD data as at 28th September 2020