



# Introduction to SACRE

Standing Advisory Council for Religious Education

# Aims

To provide an overview of the purpose and functions of SACRE

To develop understanding of the composition of SACRE and decision making processes

To develop understanding of the role and responsibilities of members

To develop a clear understanding of the legal requirements for religious education and collective worship

To foster team work and collaboration within SACRE



**BLACKBURN**  
*with*  
**DARWEN**  
BOROUGH COUNCIL

# Key Functions of a SACRE

## Curriculum Design and Development

Requiring the review of an agreed syllabus for religious education adopted by the Local Authority.

## Advice

Advising the Local Authority on matters connected with Religious Education and Collective Worship

## Reporting

Publishing minutes of meetings and an annual report of its work

## Supporting Schools

Providing advice on methods of teaching, choice of materials and provision of teacher training.

## Monitoring

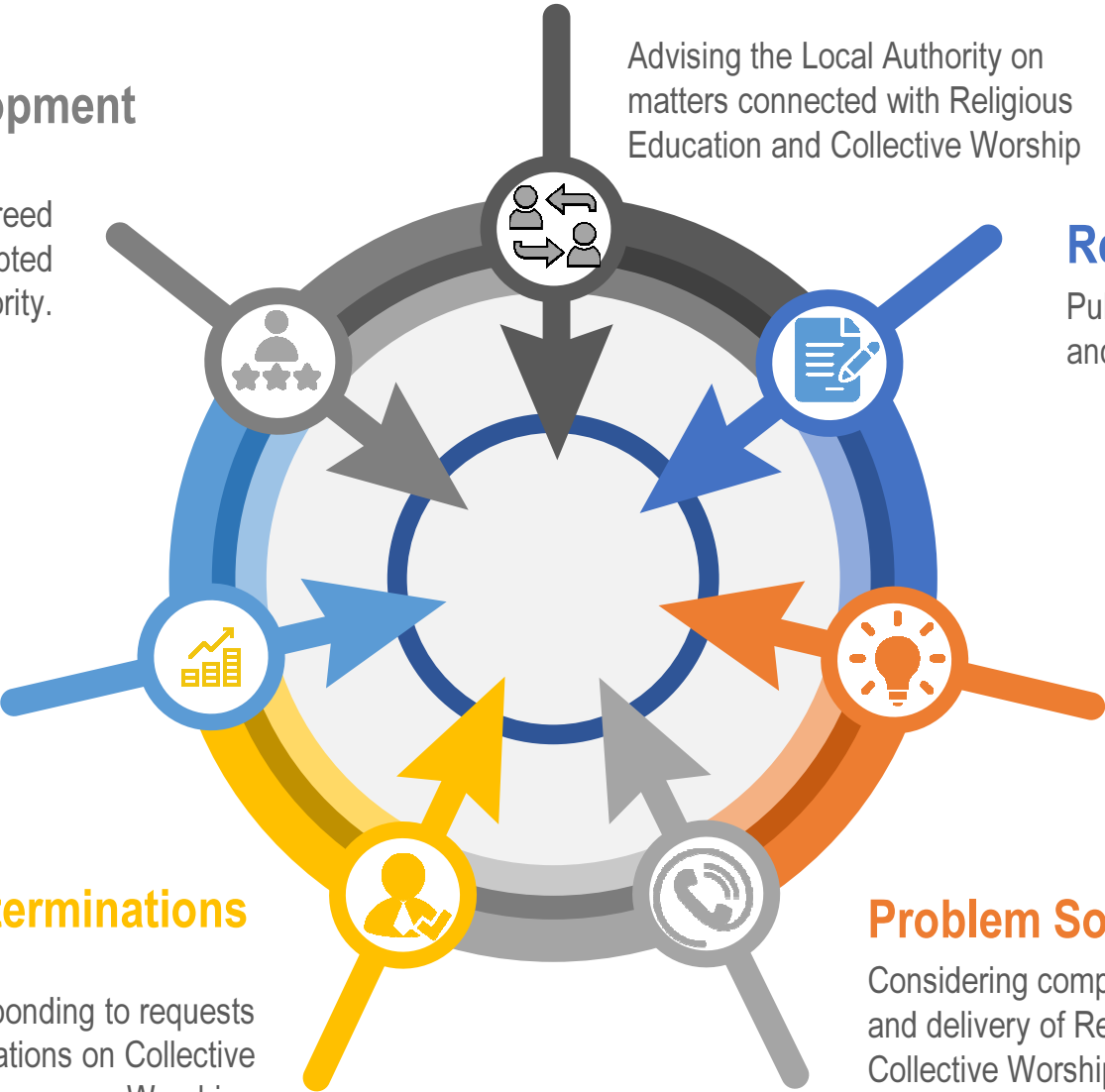
Monitoring standards of Religious Education and Collective Worship

## Making Determinations

Receiving and responding to requests for determinations on Collective Worship .

## Problem Solving

Considering complaints about the provision and delivery of Religious Education and Collective Worship referred by the Local Authority



# SACRE STRUCTURE

The Local Authority



Religions and other Christian Denominations.



Committee A  
1 Vote

Committee D  
1 Vote

Committee B  
1 Vote

Professional Associations.



Committee C  
1 Vote

Church of England.





## Why serve on a SACRE?

Serving on any SACRE should be a rewarding experience.

Through active participation members contribute to:

- the quality of Religious Education and Collective Worship across the Local Authority
- promote interfaith dialogue and community cohesion.

# Religious Education & the law

Religious Education is a  
statutory

Maintained schools must follow  
the local agreed syllabus.

Religious Education is locally  
determined

# Religious Education and the law

Voluntary Aided  
Schools

Foundation  
schools and  
Voluntary  
Controlled schools

Academies and  
Free schools

# Religious Education and the law

Design requirement

Local design to reflect  
local context

Regularly reviewed





# Collective Worship and the law

Daily worship is an entitlement for all.

Must be of a 'broadly Christian character'.

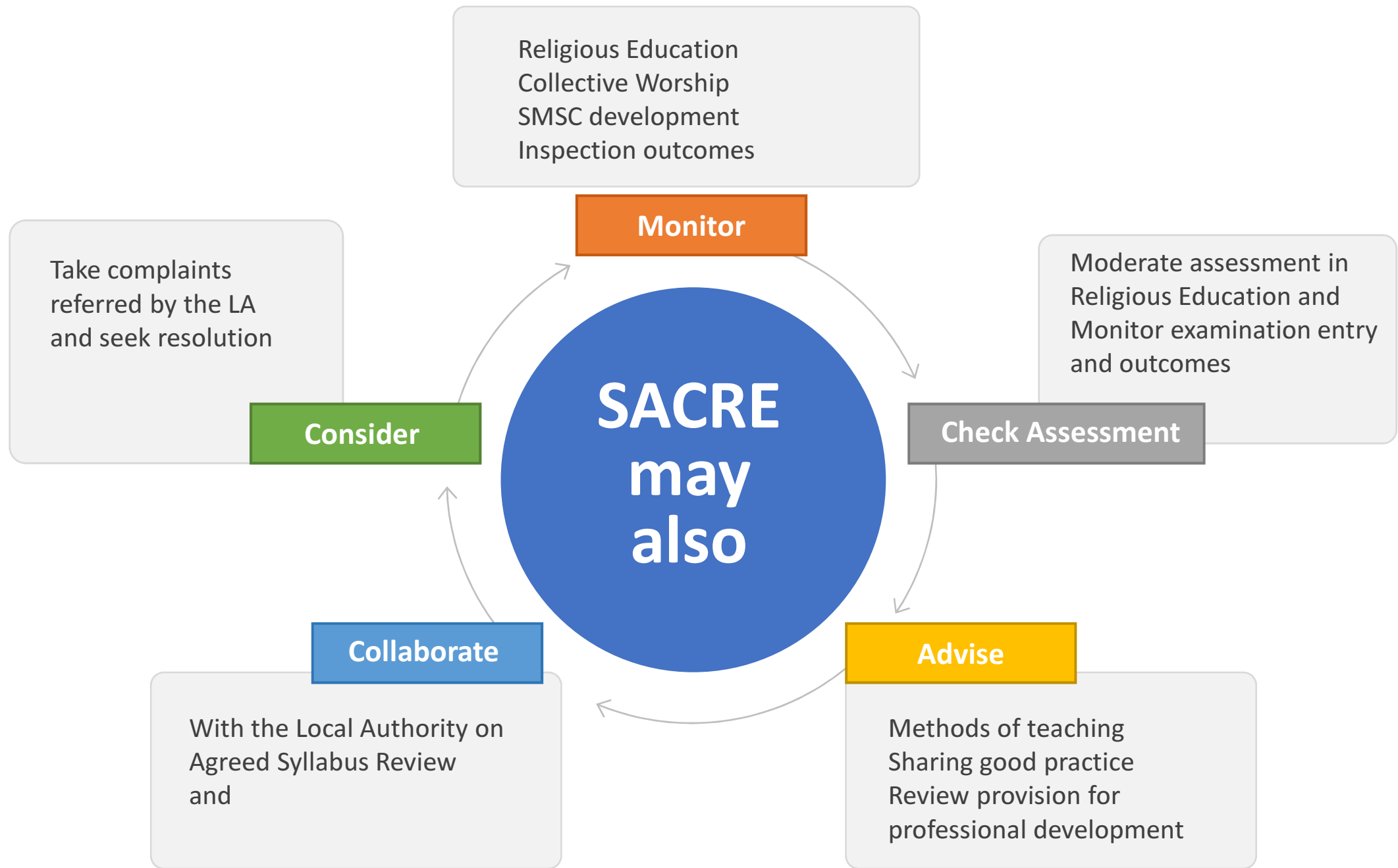
Determinations:

SACRE assess the request

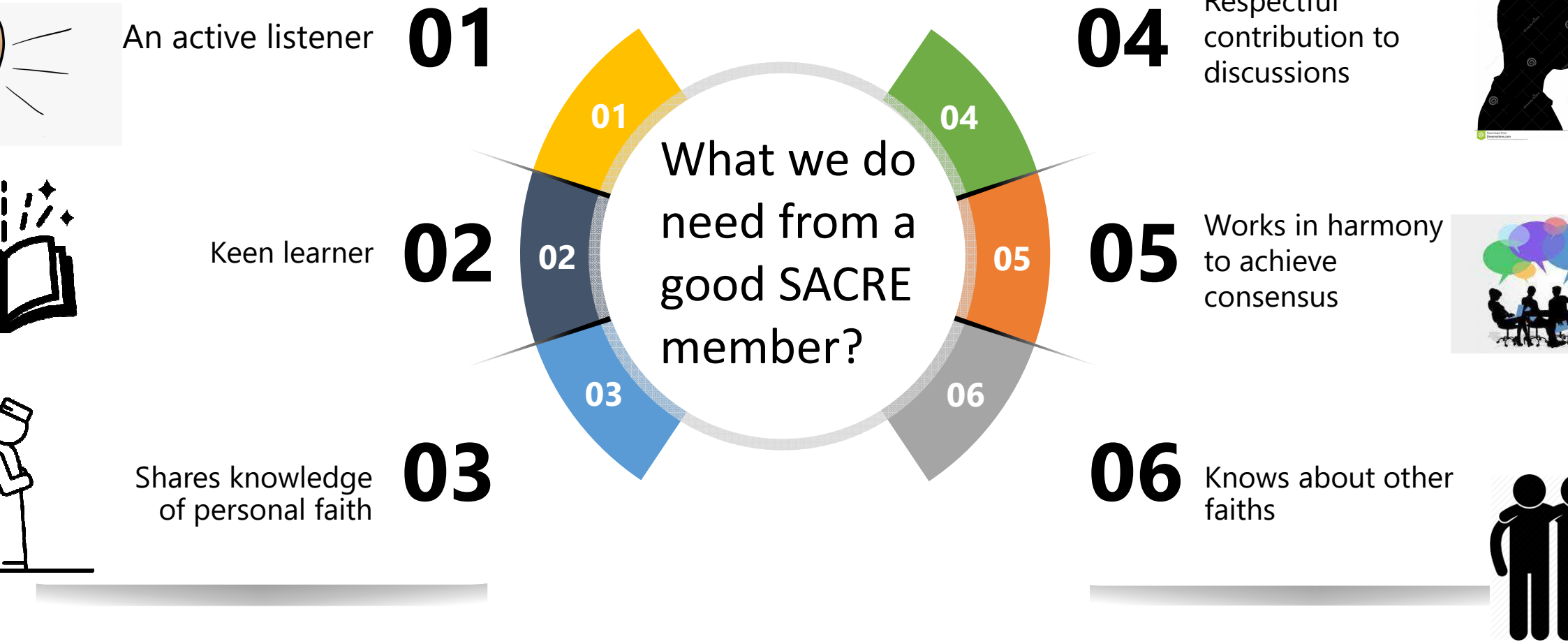
Determination reviewed at least every 5 years.

## The right to withdraw

Parents have the right to withdraw their children from Religious Education and/or Collective Worship. This can be for a specific aspect or activity. Sixth form students may withdraw themselves from collective worship



# Working as a collaborative member of SACRE



# What else we do need from a good SACRE member?



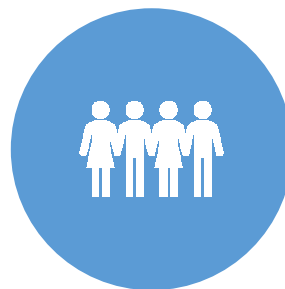
Commitment to regular attendance at meetings



Keeping well informed about new developments both nationally and locally



Willingness to engage with schools, teachers and pupils



A positive advocate of the group who has nominated them to serve and makes accurate representation

Other  
places of  
formation  
and  
support ..

Faith Education  
Boards and  
Officers

NASACRE

NATRE

RE Online

RE Today

RE Quality  
Mark

RE Council

A SACRE  
must.....

