

Electric Vehicle Footway Cable channel

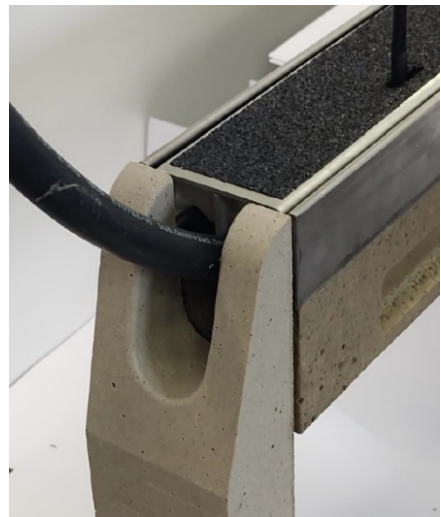
Blackburn with Darwen Council are providing Electric Vehicle (EV) footway cable channels across the borough, as an option for making on-street EV charging safer and more accessible for households without off-street parking.

The aim of the cable channel is to enable householders to charge their Electric Vehicle safely from their domestic electricity supply whilst parked on the adopted highway.

Upon approval of a funded application, Blackburn with Darwen Council will install a cable channel into the footway for eligible households without off-street parking. The cable channel is designed to sit flush with the pavement surface to minimise trip hazards and hinderance to wheelchair users or prams. The design enables a cable to be inserted into the channel whilst the car is connected to the home charge point, and then removed once the charging session is complete.

The EV footway cable channel involves two elements:

1. A domestic EV charge point (funded privately by the household) installed on the household's private land by an approved OZEV installer.
2. EV cable channel and enabling works that will be installed within the public footway by Blackburn with Darwen Council. Once installed Blackburn with Darwen Council will own and maintain the channel but reserve the right to remove or infill the EV cable channel if it does not successfully work as intended, is misused, or is no longer needed.



Guide Price (prices vary but will be confirmed after site inspection):

A) Up to 2m of cable channel (cut to fit) £300 labour + £400 2m channel + £50 materials + Admin £100 = £850

B) Up to 3m of cable channel (cut to fit) £300 labour + £600 3m channel + £100 materials + Admin £100 = £1100

The cost to purchase the cable channel and installation fee, will be the responsibility of the resident making the application – however there is currently a government grant available to off-set some of the cost.

We understand that in some areas it can prove challenging to park outside your home, and this will also make charging more difficult. However, these channels could provide a suitable solution in some areas and will allow savings to be made on the cost of charging your vehicle.

For more information on cable channels, read our FAQs below.

Eligibility Criteria

To be eligible for the EV cable channel, applicants must:

1. Own or lease an EV, which includes a battery EV (BEV), hybrid EV (PHEV), and extended-range EV (E-REV)
NB - Blackburn with Darwen Council will accept pending purchase/lease agreements.

2. Have no access to off-street parking provision, including a driveway, forecourt, communal parking, garage or similar off-street area to park the EV.

3. Have permission from the landowner / property owner to install EV charging infrastructure if they do not own the property NB - Written permission must be provided.

4. Blackburn with Darwen Council will own and maintain the cable channel but reserve the right to remove and or infill the EV cable channel if it is misused, is no longer needed or the resident does not conform to the agreement.

5. Where EV Charge Points are installed at the front of the property that abuts the adopted highway, the applicant will ensure that the cable for the chargepoint plugs into the side or base of the charge point (and does not project out from the front of the chargepoint). See the FAQ for a list of example EV chargers that are acceptable. NB – for properties that abut the adopted highway, loose tethered cables are not accepted.

6. Not contravene restrictions set out by Rule 243 of the Highway Code.
See FAQ for more details.

7. Planning Guidance - Small electrical outlets mounted on the wall of the house for recharging electric vehicles, which do not affect the appearance of the dwelling, will not be expected to apply for planning permission as they will be considered minimal (or de minimis in planning terms). This is on the basis that the associated infrastructure to house the cabling, which is necessary outside of the house curtilage, for example across the pavement, is installed by the Council. It's also essential that the cable is removed when not in use.

Planning permission will be required where the charging point:

- a) Exceeds 0.2 cubic metres volume.
- b) Faces onto and is directly on the highway / pavement.
- c) Is within a site designated as a scheduled monument; or
- d) Is within the curtilage of a listed building.

Each request will be considered on a case-by-case basis as it is recognised that the cable channel may not be a suitable option for some properties.

Applicants must meet all the essential criteria to be considered for the footway charging cable channel and all applications will require a site inspection to assess their suitability before eligibility is confirmed.

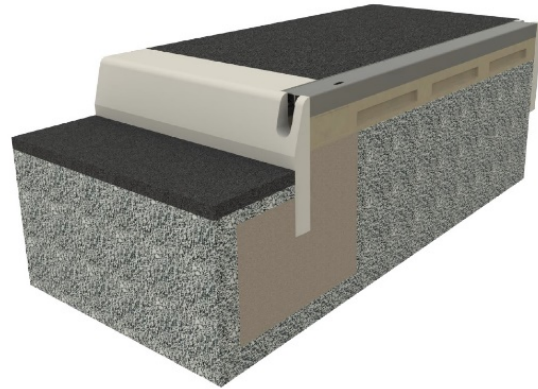


Application

Residents can apply using the below form.

Name: _____

Address: _____



Have you read and understood the eligibility notes? (Yes / No)

Do you presently own, lease or use an Electric Vehicle (EV)? (Yes / No)

a. If not, when are you looking to buy or take charge of an EV?

b. Is the vehicle a Battery only Vehicle – A Plugin Hybrid or a self-charge Hybrid?

Do you have access to off-street parking, a drive or space to park your vehicle that is not on the road?

Does your front door open:

a. directly on to the footpath

b. onto a privately owned area between the door and the footpath

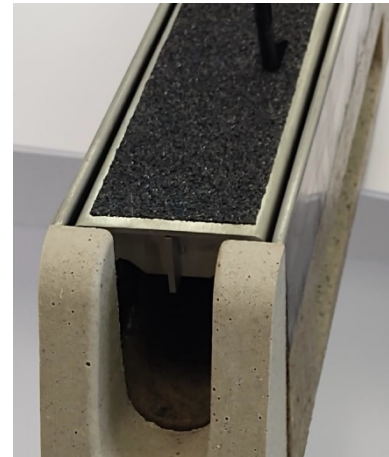
Is there an area of grass verge between the property and the area where your vehicle will be parked whilst charging?

Is there any electrically earthed equipment (e.g. lighting columns, illuminated signs or any electrically connected highway asset) within 2.5 metres as to where your vehicle would be parked whilst charging?

Charging cable type

Which cable type(s) do you intend to use:

- Type 2, Type 1, Commando, or 3-pin plug up to 20mm diameter suitable for slow charging
- Type 2, Type 1, Commando, or 3-pin plug up to 26mm diameter suitable for fast charging



Do you own the property or is it rented?

Parking Restrictions

Are there any parking restrictions on the highway which will prevent you parking within 2m of the property?

Do you have any mobility restrictions which will make it difficult to insert and remove a cable from the footway level channel?

Please attach a photo(s) of where the home charging unit will be installed and where the vehicle will be parked whilst charging.

Cable Channel Agreements (insert your name, tick all the boxes and sign where required):

I _____ agree to conform to the following agreements:

I agree to keep the cable channel clear from leaves and debris.

I agree to use the cable channel in a way that keeps the highway user safe.

I agree to remove the cable when not in use and keep it in a safe place.

I agree to conform to all traffic regulation orders when using the cable channel.

Sign to confirm the above agreements: _____ Date:

__/__/____

FAQs: On-street electric vehicle charging

Cable channels for home electric vehicle charging questions and answers

Which EV chargers would be acceptable for properties without a front garden that abut the adopted highway?

Only EV chargers that have sockets on the side or base (or the cable is completely contained within the EV Charger box when not in use).

Example EV Chargers:

Easee One EV Charger

Simpson and Partners EV Charger

Project EV Pro Earth EVA-07S EV Charger

Example EV Charger with contained cable:

Anderson A2 and Anderson A3 EV Chargers



Is this the best solution?

This is one solution that could help people charge from home. Currently, around 30% of the UK do not have access to off-street parking, so charging at home is not a viable option and EV ownership is more challenging.

We are also working on a LEVI funded project, to install charge points across Blackburn with Darwen. The cablechannel option is intended to complement the wider availability of charge points.

Is it possible to guarantee a space outside your house?

Most on-street parking is on the public highway, so spaces cannot be allocated exclusively for individuals with Electric Vehicles. We recognise, that in some areas, parking outside of the home is at a premium. In these areas, this may not be a suitable way forward. In other areas, however, this isn't the case. For these, a cable channel is a potential option for electric vehicle charging that is worth exploring. We hope that residents would cooperate with one-another to best manage the available space to allow EV charging when needed.

NB - It is worth noting that for a driver who would do on average 10,000 miles per year with an EV that has a range of 200 miles would only need to charge on average between four or five times per month. Vehicles with a range of 300 miles doing 10,000 miles per year may only require charging twice or three times per month.

What's to stop people from cutting cables?

As is the case with electric vehicle charge points that are located on street or in car parks, there is nothing to stop the cable from being cut; although they would be cutting a mains cable, which is dangerous. The cable should be removed from the channel by the user when not in use for charging.

Does the cable channel pose a trip hazard for pedestrians, wheelchair users and prams?

The channels are purposefully designed to remove this issue and sit flush with the pavement surface to minimise the risk of anyone tripping or catching their foot or hinder people walking past or wheelchairs and prams. This approach has been developed through trials in other parts of the country which have explored a number of options with preventing a potential trip hazard being a primary concern.

Can rainwater gather in the channel and freeze in winter?

The intention will be for the channel to be slightly sloped, so will drain to the road. We wouldn't expect standing water to gather in the channel and freeze.

What happens if the footpath needs digging up to repair underground water, gas or telephone services?

The channel would either be removed and then re-instated once the works are completed or, in some cases, the contractor may be able to trench underneath the channel, leaving it undisturbed. Where pavements need to be resurfaced, in most instances tarmac can be laid up to each side of the channel without the need for removal.

Would we reduce the cost of dropped kerbs, so residents can have one on their own property?

The costs of a dropped kerb are set at a level where we can recover the costs. We don't envisage a circumstance where we'll be able to discount or subsidise this.

How will it work for flats?

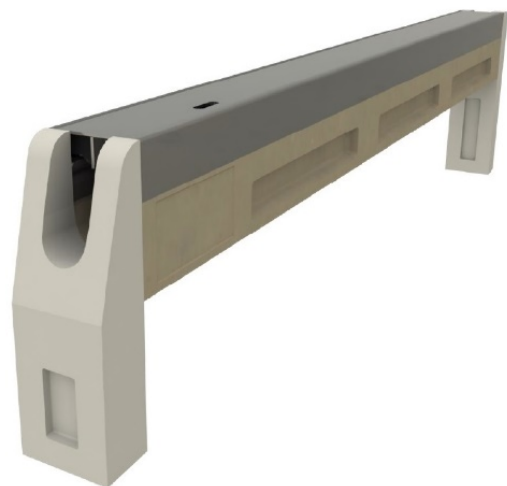
We're only looking at on-street parking for this scheme. Usually, flats have allocated parking areas away from the public highway. We recommend residents request their management company to make arrangements for EV chargepoints to be installed.

Will we cover the installation cost?

No – unfortunately the cost for the purchase and installation of the cable channel will be paid for by the resident. However, there is a government grant available that will contribute to the cost.

Who pays for the electricity?

The cable channel allows the resident to have their own EV charge point installed on their property and they would then be responsible for paying the electricity costs to charge their car as part of their usual electricity bill. Access to home charging greatly reduces the cost of running an electric vehicle.



Does the cable have to be armoured?

The cable channel allows for a standard EV charging cable to be used. These are typically armoured. The cable would need to be removed when the vehicle isn't being charged.

What happens when the road sweeper comes along?

If the car is being charged, the cable would be shielded by the car. When not in use, the cable should be removed.

How will the channels be cleaned – will the channels fill up with dirt and get blocked?

The cable channel has a cover which allows access for the cable and limits dirt from entering. The householder would be expected to clean out the channel out with a brush if needed.

If you have no front garden, where can you install a charging unit?

You may be able to install a charging unit on the wall of your property so long as it doesn't encroach the highway. We recommended taking advice from a charge point company or an approved installer of home charge points about whether this is feasible or not. NB – please see the eligibility criteria planning guidance and other FAQ question related to this point.

What cable will we put in the channel?

The channel is only for the homeowner to use to charge their electric vehicle using their own charging cable.

What are examples of locations where a cable channel will not be permitted?

Blackburn with Darwen Council may be unable to install a cable channel, for example: where there are existing parking restrictions such as double yellow lines, near to a school entrance, near to a bus stop, within 10m from a junction, opposite a traffic island or for any other reason that would be deemed to cause a safety concern for the Highway User.

